

EUROPEAN NEIGHBOURHOOD AND PARTNERSHIP INSTRUMENT
2007-2013 CROSS BORDER COOPERATION PROGRAMME
LATVIA-LITHUANIA-BELARUS

Management plans of protected territories in Latvia: «Daugavas loki» example

Establishment of cross-border protected nature territory “Augšdaugava-Braslav Lakes” and creating of preconditions for integrated area management

Cross-border Nature

11.02.2014.



Šo programmu finansē
Eiropas Savienība



Cross-border Nature



Dabas
aizsardzības
pārvalde

Management plans for Specially Protected Nature areas in Latvia:

- Optional, not obligatory
- Recommendation, not legislative
- Should be considered in Spatial Planning
- Approved by Order of Minister of Environment and Regional Development
- Procedure and content regulated by Regulations of Cabinet of Ministers

Management plans: procedure

Management plans includes obligatory public involvement:

- Informative meeting in beginning of development of plan
- Establishment of Supervisory Board (representatives of landowners, NGO's, municipalities, state institutions)
- Meetings of Supervisory Board (at least 3)
- Public hearing

Management plan: contents

General description



Management plan: contents

General description:

- **general information**
- **location, coordinates, area**
- **land use forms and property forms**
- **existing and planned or allowed use of territory according spatial planning documents**
- **short description of management and conservation history**

Management plan: contents

General description:

- **information about cultural history of area**
- **functions and responsibilities of state and municipality institutions in SPT**
- **laws and regulations concerning SPT (including issued by municipality)**
- **description of social and economic situation**

Management plan: contents

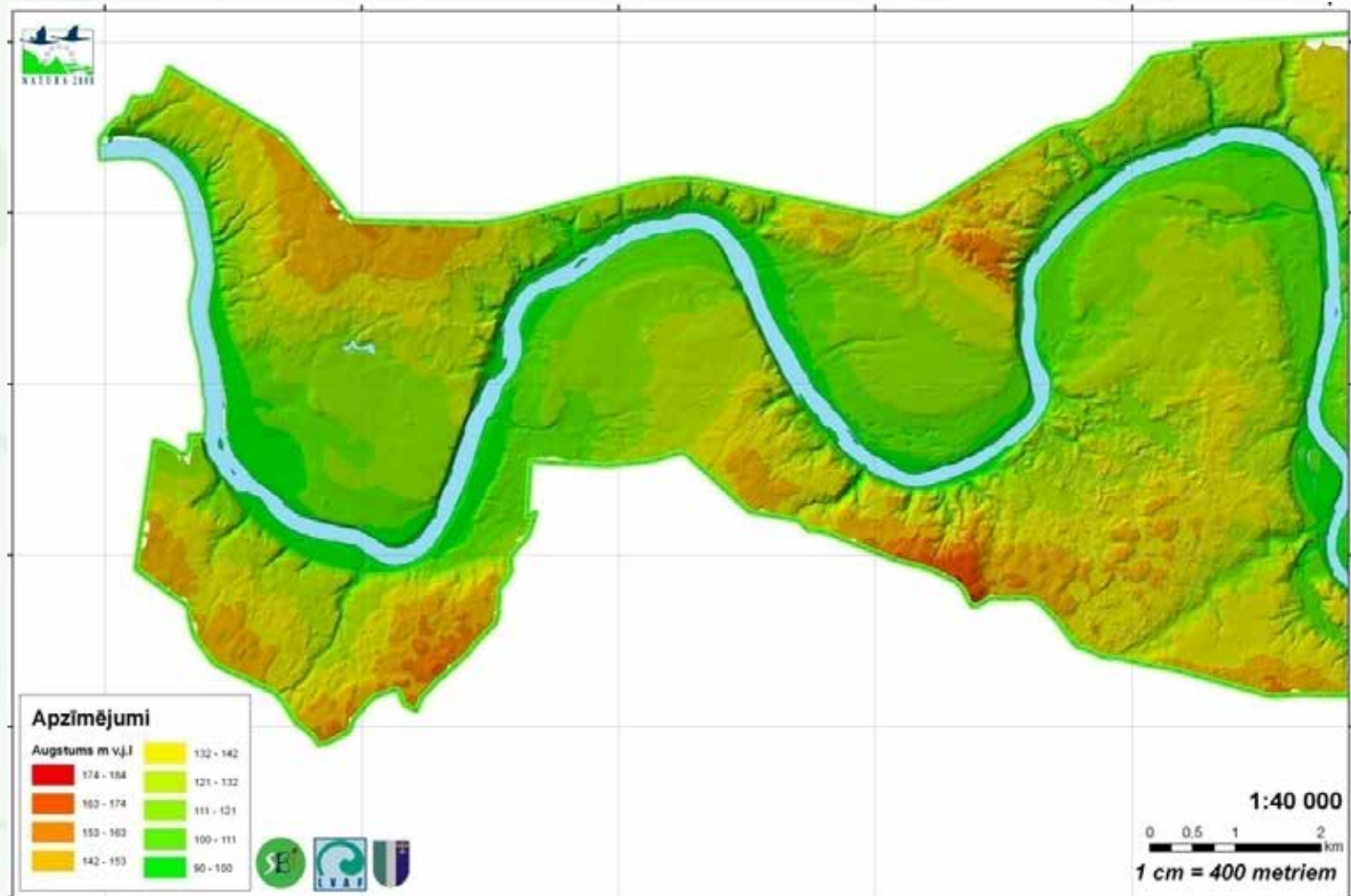
General description: short description of physical geography of SPT (climate, geology, geomorphology, hydrology, soils)

- River valley developed 15 – 13 thousands years ago
- The river Daugava as permanent water stream developed 12 thousands years ago
- The river banks can show up to 8 terraces (several metres of sand or gravel)
- More than 1700 springs (Piedruja - Daugavpils)



Management plan: contents

Physical geography: 3D models



Management plan: contents

Assessment of Specially Protected territory: landscapes

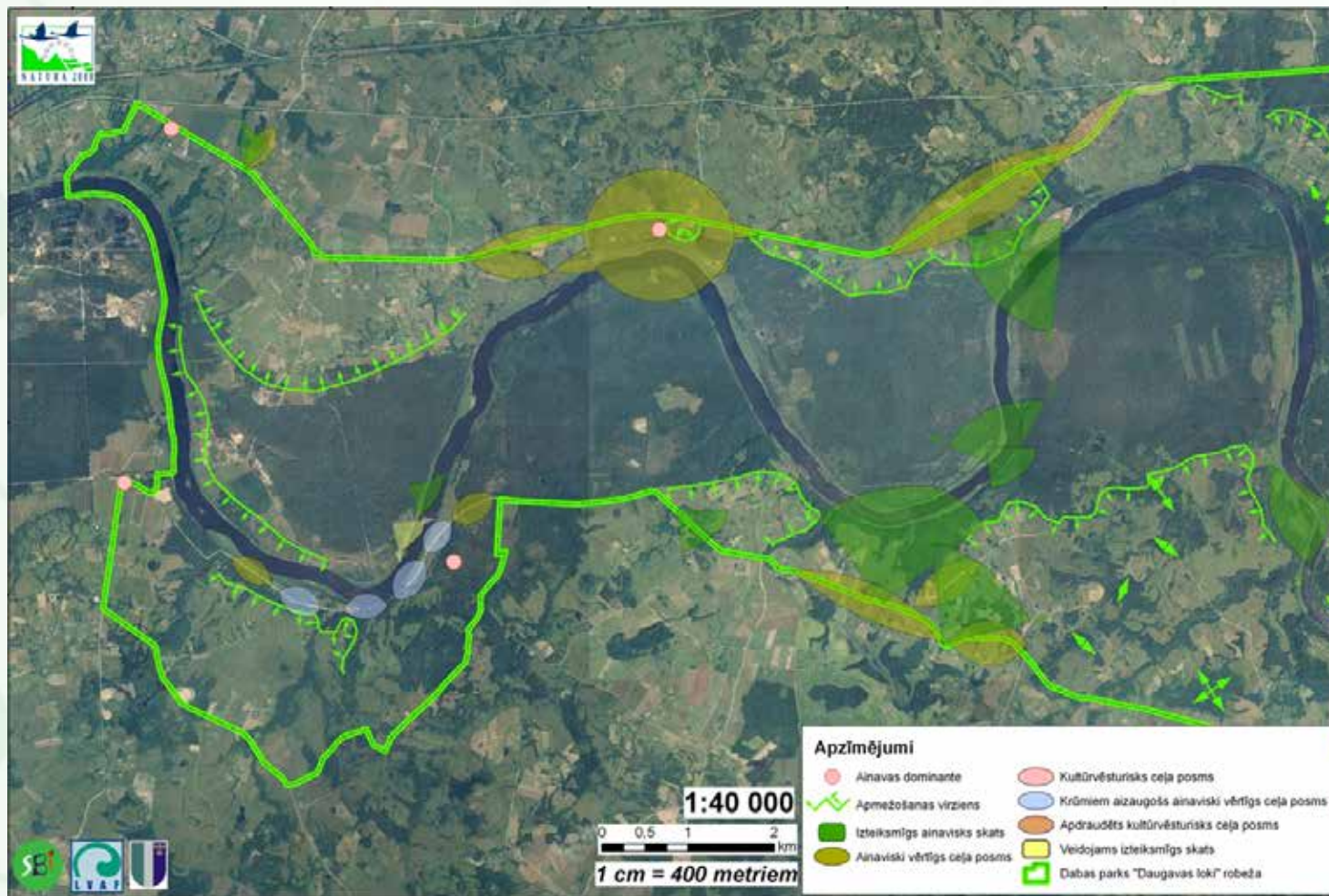
The territory is inhabited already 11 thousands years – development of rich cultural landscape

- Sacral buildings
- Structure of building
- Landscape perspective
- Forests on slopes and ravines
- River
- People



Management plan: contents

Assessment of Specially Protected territory: landscapes



Management plan: contents

Assessment of Specially Protected territory: habitats

- Forests on slopes and ravines
- Western Taiga
- Petrifying springs with tufa formation
- Water courses of plain to montane levels
- Different grasslands (dry, wet)
- Fennoscandian mineral-rich springs and springfens



Assessment of Specially Protected territory: species

Birds

- 139 species (2008 g.), nesting 104
- 33 rare and protected (nesting 19)
- 14 microreserve species

Invertebrates

- 64 rare and protected
- 9 microreserve species

Mammals

- 8 species of bats
- Otter
- Ermine
- Marten



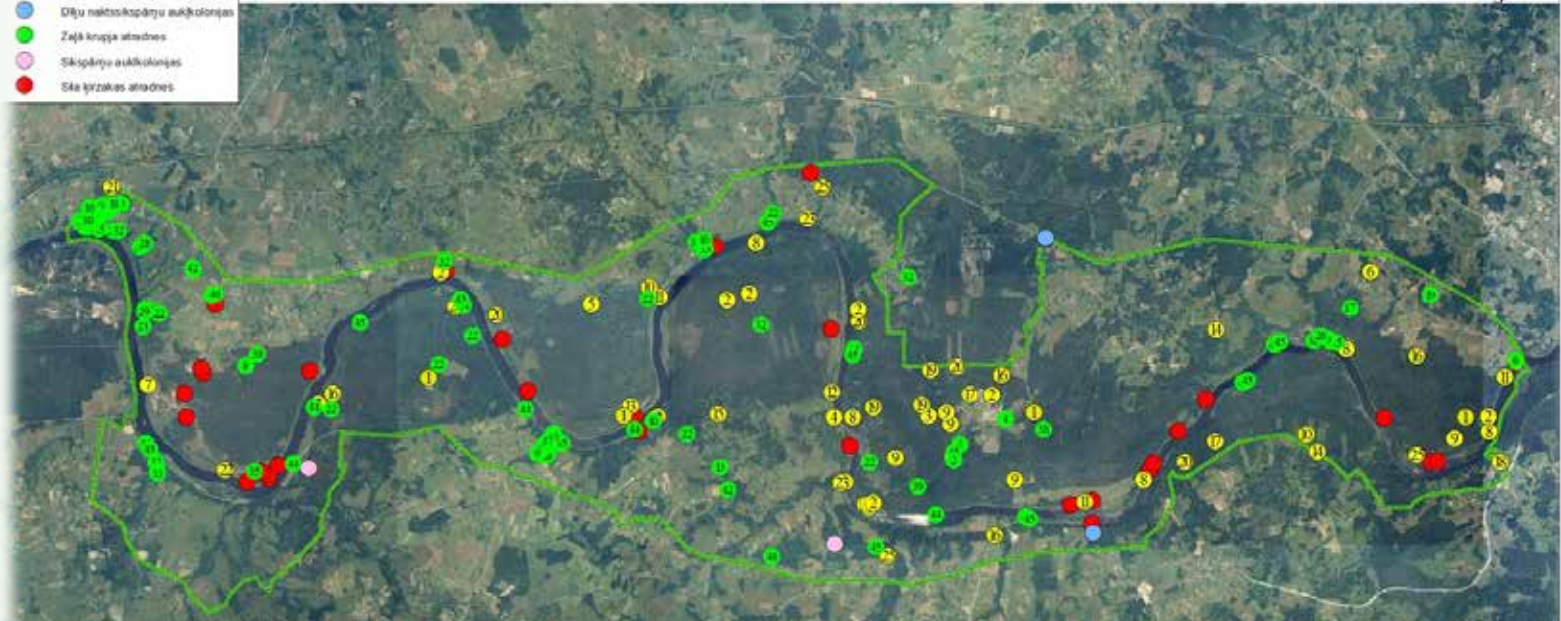
Assessment of Specially Protected territory: species



Dabas parks "Daugavas loki" aizsargājamās bezmugurkaulnieku, abinieku, putnu un zīdītāju sugas



- apzīmējumi**
- DP "Daugavas loki" robeža
 - Dīļu naktskopāņu auktīzonas
 - Zāļi krūpu auktīzones
 - Sīkspārņu auktīzonas
 - Sīka ķirzakas auktīzones



DP "Daugavas loki" aizsargājamās putnu sugas

- | | |
|-------------------------|---------------------|
| 1 Apodziņš | 11 Nīdris līcis |
| 2 Baltmugurdzirnis | 12 Ormanlīcis |
| 3 Biešankas apogis | 13 Pelēkā dzirnis |
| 4 Dzirnis | 14 Rubenis |
| 5 Dzirņa stārķis | 15 Sīvītais līcis |
| 6 Kutele | 16 Tīrpīķu dzirnis |
| 7 Lielais baltās galvas | 17 Vakarlīcis |
| 8 Lielā gaura | 18 Valdījis dzirnis |
| 9 Mazais mīkšlīcis | 19 Ziemeļu gūlis |
| 10 Mazais ērglis | 20 Ziemeļu dzirnis |
| 11 Mazā gaura | 21 Ziemeļu gūlis |
| 12 Maza stārķis | 22 Ķīps |
| 13 Maža balodis | |

DP "Daugavas loki" aizsargājamās bezmugurkaulnieku sugas

- | | | | |
|-------------------------|-----------------------------|----------------------------------|---------------------------|
| 1 Anoula pūļa | 11 Cochlicopa nitens | 21 Lycæna dispar | 31 Oxyporus mannerheimi |
| 2 Ašņna vīdīs | 12 Cochlidina orthotoma | 22 Macrogaster labiostata | 32 Papilio machaon |
| 3 Anchylo luvātāis | 13 Copris lunaris | 23 Macrogaster plicatula | 33 Platycerus coprei |
| 4 Anodonta cyanea | 14 Dicera albi | 24 Macrogaster ventricosa | 34 Platycerus castiboides |
| 5 Arctiger cista | 15 Dorcus parallelipipedus | 25 Melanidia dubia | 35 Sagmatina nitida |
| 6 Arctia moxchata | 16 Helix pomatia | 26 Meloe brevicollis | 36 Stenocorus meridicus |
| 7 Bālela bicolora | 17 Iuganostoma nogromostoma | 27 Meloe priscarabæus | 37 Theodoxus luvatiis |
| 8 Bembix rotata | 18 Laciniaria plicata | 28 Meloe violaceus | 38 Ulix crassus |
| 9 Carabus convexus | 19 Lasius fuliginosus | 29 Mycetophagus quadripustulatus | 39 Vertigo angustior |
| 10 Chalchophora mariana | 20 Limeritis camilla | 30 Odypoda coerulescens | |
| 11 Clausilia cruciata | 21 Licola namoralis | 31 Ophogomphus caesia | |
| 12 Clausilia dubia | 22 Lithoglyphus naticoides | 32 Osmodonta eremita | |

1:25 000

0 1 2 4 km

1 centimetrs = 250 metri

Assessment of Specially Protected territory: species

Plant species

- 47 rare and protected species
- 23 microreserve species



Atvašu saulrietenis

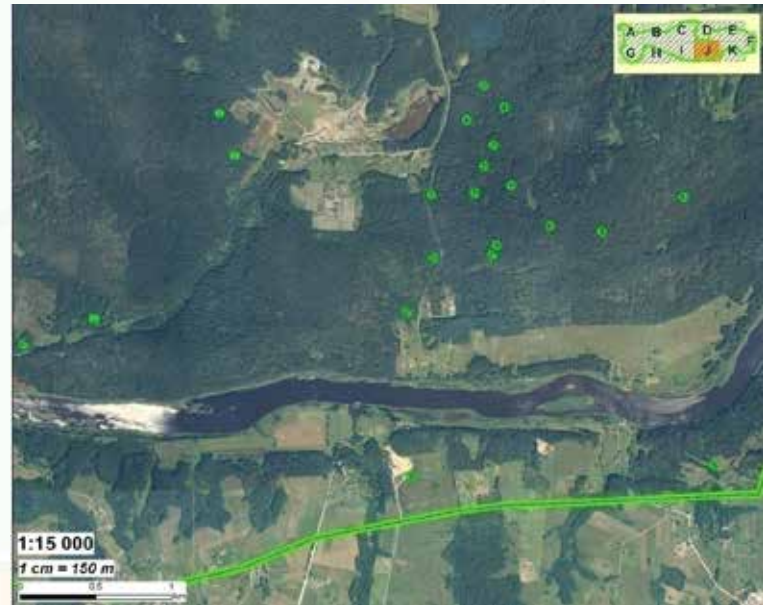
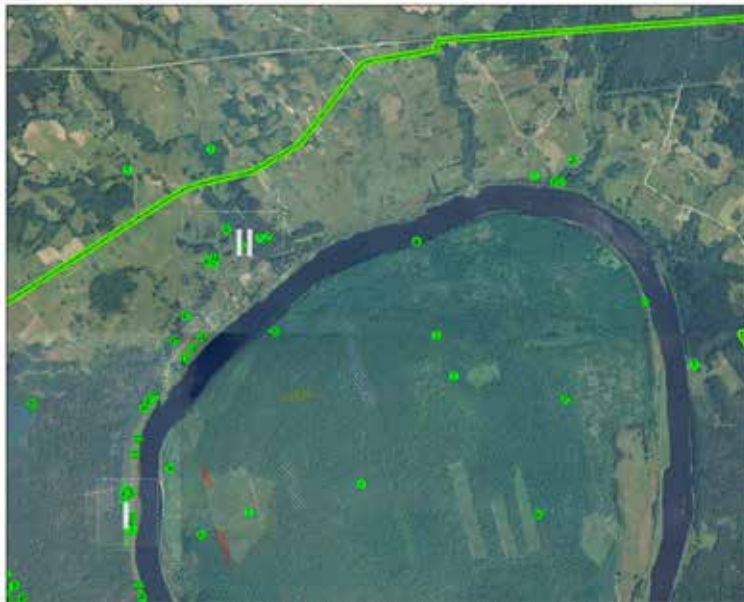


Piramidālais cekuliņš



Šultesa madara

Assessment of Specially Protected territory: plant species

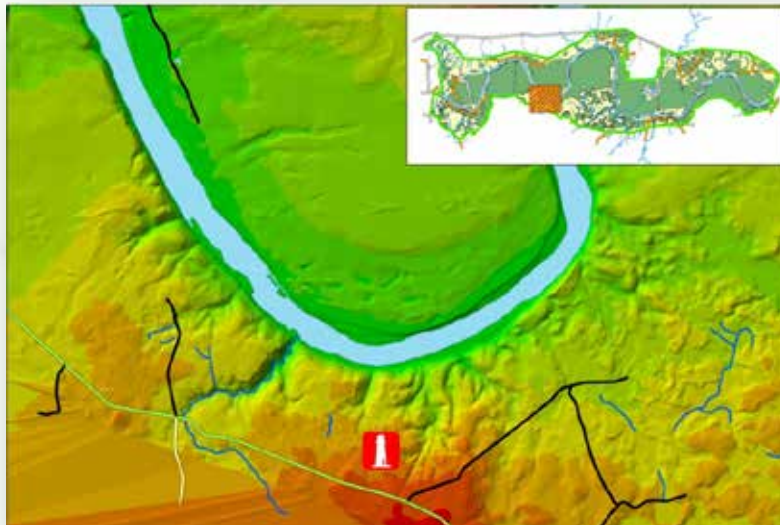


Aut. Pástor-Banász, V. Balázs

Management plan: contents

Information on management of SPT

- short-term and long-term conservation and management aims for SPT
- detailed description of planned management measures for reaching the goals of SPT



Management plan: contents

Proposals for amendments to spatial planning documents for municipalities

Proposal to individual Regulation of Cabinet of Ministers for SPT

Дзякую

за

ўвагу!



Nature Conservation Agency
Baznīcas street 7, Sigulda,
LV 2150 Latvija
Phone.: 67509545; fakss: 67509544;
e-mail: daba@daba.gov.lv
Home page: <http://www.daba.gov.lv>



Šo programmu finansē
Eiropas Savienība



Cross-border Nature



Dabas
aizsardzības
pārvalde

*Photos: R. Cibulskis,
D. Teļnovs, J. Smaļinskis
J. Soms P. Evarts-Bunders*